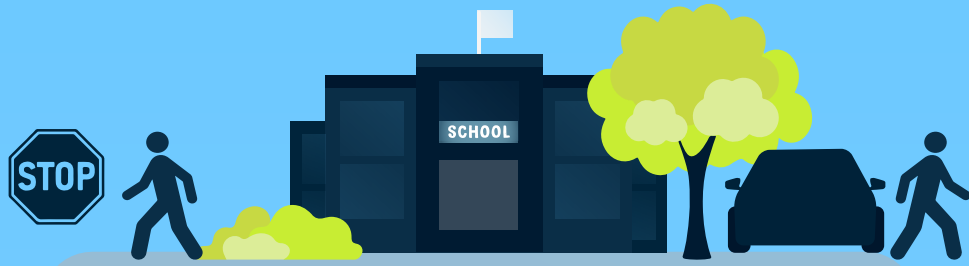


Pikmykid

Dismissal Automation

How a dismissal automation tool like Pikmykid helps make student dismissal more efficient and a safer process daily.



WITHOUT AUTOMATION



WITH AUTOMATION

PRIOR TO DISMISSAL

Front office answers parent calls and messages teachers with dismissal changes.

Teachers manually track changes of the student's dismissal plans.

If after school activities are canceled staff call each parent.

Parents make dismissal changes in the app, which automatically updates the teacher's list.

Teachers' dismissal lists are updated instantly with changes.

If after school activities are canceled staff send one message to all impacted parents.

DURING DISMISSAL

Dismissal coordinator announces via walkie talkies to send out students when parents arrive.

Teachers listen for announcements made to release each student.

Dismissal coordinator hopes the pickup person is allowed to pick up the student.

Dismissal coordinator helps the student into the car.

Parent hopes the teacher saw the dismissal change note.

Calls need to be made to parents if a bus is running late.

Principal assumes all students have been safely dismissed.

Parent's arrival is announced through the app.

Teacher sees on their screen as soon as the parent or bus arrives for each student.

The pickup person is automatically verified through the app.

Dismissal coordinator helps the student into the car and marks them as dismissed in the portal.

Parent gets a notification their kids were safely dismissed.

If a bus is running late, a notification can be sent to parents via the app.

Principal can accurately see when every student was dismissed.

POST DISMISSAL

Principals rely on teacher's manual reports of who, how and when a student was dismissed.

Principals can pull reports of who, how and when a student was dismissed.

Transform your end of day chaos into a stress-free and ultra safe experience for staff, parents and students with Pikmykid's award-winning school dismissal manager.

[REQUEST A DEMO](#)